

## Contact the Parish Council

Do you have a question, concern or suggestion? We're here to listen and help with matters affecting our community. Whether it's about local issues, upcoming events, or services, the parish council is dedicated to making our village a better place. Get in touch, we'd love to hear from you!

Email [clerk@littlemalvernandwelland-pc.gov.uk](mailto:clerk@littlemalvernandwelland-pc.gov.uk)

## Local Groups

See local groups section of our website for more info on the groups and activities mentioned below:

- Yoga
- Latin dance
- Pilates
- Taekwondo
- Football (ladies, juniors)
- Welland Preschool
- Arts and Crafts group
- Walking group
- History group
- Welland WI
- Pursers Orchard Workers
- U3A short mat bowling
- Little Dancers classes

## Volunteering in Welland

There are lots of ways to get involved in volunteering in Welland, to help our community thrive. Interested?

Visit [littlemalvernandwelland-pc.gov.uk/volunteering](http://littlemalvernandwelland-pc.gov.uk/volunteering)

## Zest 4 Life Lunch Club

Weekly lunch club on Wednesdays at 1:30pm at the Parish Hall. Two course lunch and unlimited tea, coffee and soft drinks for £6, with a large helping of fun and laughter. Why not come along to meet new friends? No need to book!

## Welland Against Food Waste

Join us every Sunday at 10am at the Village Hall, for a free giveaway of surplus food donated by M&S. It's usually fresh produce that is still within its 'use by' date - we don't know what we're getting beforehand.

No eligibility requirements, free for all to come and help themselves. Once it's gone it's gone!

## Biodiversity and Environment

Interested in nature and the local environment? Join our biodiversity and environment mailing list for information on local projects, volunteering opportunities and events.

[environmentandplanning@littlemalvernandwelland-pc.gov.uk](mailto:environmentandplanning@littlemalvernandwelland-pc.gov.uk)

## Sports Facilities in Welland

We're so lucky to have so many sports facilities in Welland. Visit Spitalfields for: outdoor gym, basketball, football, teqball, table tennis, cricket wicket.

Visit [littlemalvernandwelland-pc.gov.uk/sport/](http://littlemalvernandwelland-pc.gov.uk/sport/)

## Stay up to date with What's on in Welland

Website: [www.littlemalvernandwelland-pc.gov.uk](http://www.littlemalvernandwelland-pc.gov.uk)

Whatsapp: [www.littlemalvernandwelland-pc.gov.uk/whatsapp](http://www.littlemalvernandwelland-pc.gov.uk/whatsapp) (or scan QR code →)

Facebook: [www.facebook.com/wellandparishnoticeboard](http://www.facebook.com/wellandparishnoticeboard)

Email: Sign up to our mailing list by emailing [rachel.sampson@littlemalvernandwelland-pc.gov.uk](mailto:rachel.sampson@littlemalvernandwelland-pc.gov.uk)

Check our noticeboard, located by the village shop



## Fish and Chip Van in Welland

'Hooked and Cooked' now visits Welland fortnightly on a Thursday, 4.30pm till 8pm, by the Parish Hall. Cash and card are both accepted. Pre-orders on 07765951263.

## Bus Services

### Worcestershire on Demand

This flexible transport service is serving an ever expanding list of drop off and pick up points in Malvern and the surrounding area. Runs from 7am-7pm Mon-Sat.

Download the Worcestershire on Demand app or book via 01905 846180.

### Improved 363 bus service

The 363 bus service travels from Worcester to Ryall via Welland, with stops in Upton and other nearby villages.

[bustimes.org/localities/welland-worcs](http://bustimes.org/localities/welland-worcs)

## Outdoor Gym Sessions

Fun, accessible, instructor-led workouts at Spitalfields Outdoor Gym in Welland. All abilities welcome!

Every Friday at 10am. First session free (£5 thereafter).

Call Malvern Splash on 01684 893423 to book (or book online if you are a member).



Welland Residents Charity looks to help local people who would benefit from a bit of financial assistance. They offer one-off grants to give a helping hand when needed. In the last year, they have made donations to the community larder in St James' Church, given vouchers for use in the village store at Christmas, assisted one resident with help with bills, and helped to buy some books for a young resident about to go to university.

If you are in need of help and would like to apply, please email [wellandresidentscharitywrc@gmail.com](mailto:wellandresidentscharitywrc@gmail.com) with your request. To be eligible you must live in Welland. Each application is considered by the trustees on its merits. The modest grants are not means tested and are aimed at those in need.

## Welland Social Space & Library

Located in the small room of the Parish Hall. Come along to the library where we have lots of great books for you to borrow! You can also order online from a wider selection via the Worcestershire Libraries website and then collect locally. [worcestershire.gov.uk/council-services/libraries](http://worcestershire.gov.uk/council-services/libraries)

Mondays: 2pm-4pm  
Tuesdays: 8.30am-9:45am  
Thursdays: 10.00am-12pm



# LITTLE MALVERN AND WELLAND

Newsletter  
June 2026



## WELLAND SUMMER BASH

Sunday 21st June • 12 Noon to 3 pm

Bouncy Castle . Carousel . Fairground Stalls . Football Challenges . Circus Skills . Skittles . Family Sports  
Village Food and Drink . Street Food . Bar . Teas . Cakes . Ice Cream . Candyfloss . **FREE ENTRY**  
Tombola . Prize Raffle . Face Painting . Petting Zoo . Live Music . DISCO

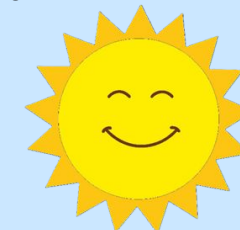
Don't miss our Summer Bash on Sunday 21<sup>st</sup> June! Come with the family and help us celebrate the longest day and Father's Day at this wonderful village fete with extras. Featuring live music from tribute act Lolly Parton, a petting zoo, bouncy castle, sports day games and more! You'll meet and chat with lots of friends and neighbours; a great way to spend a sunny (hopefully) summer afternoon!

**FREE ENTRY!** Proceeds from the Bash help support village events for future years and surpluses are donated to local charities: Welland Residents Charity, Welland Preschool, Welland Primary school PTA, Pursers Orchard Group.

There is also a fabulous raffle with lots of prizes donated by local businesses including Inn at Welland, Clives Fruit Farm, Marlbank Indian, Marlbank Vineyard, Welland Cinema, Welland Steam Rally, Welland Stores, NuYard, Plume of Feathers, Farmers Arms, Robin Hood Inn and more. You can buy tickets in advance at the Village Store or on the day.

### VOLUNTEERS AND SUPPORT ARE URGENTLY NEEDED:

- Bake a cake for our tea room
- Donate tombola prizes (collection boxes in the Parish Hall and Village Store)
- Help out at a stall for an hour on the day



If you can help with any of the above please email [barbarastephens.cdc@gmail.com](mailto:barbarastephens.cdc@gmail.com), call Mick on 07739 633249 or contact us via our facebook page.

## Welland Big Summer Quiz!

Back by popular demand!

Join us for our Summer Quiz - a fun and sociable evening that will be raising money for Pursers Orchard and Community Action.



When: Saturday 4th July 7pm (doors open 6:30pm)  
Where: Welland Parish Hall  
Tickets: £5 (free under 12yrs) - from Village Shop or via [ticketsource.co.uk/wellandparish](http://ticketsource.co.uk/wellandparish)

Teams of up to 6 - if you don't have a team no problem! We can find you a friendly table. It's all about having fun!

Feel free to bring your own snacks, there will be a licensed bar available for purchasing drinks.

## Pursers Orchard Update

If you have visited Pursers Orchard in the Spring you will have seen and enjoyed a wealth of flowers and vegetation and the delights of our wonderful pond, teeming with life. Biodiversity abounds! The fruit blossom is amazing, we have never seen so many plums set, and we're expecting masses of blackberries to go with the apples and pears. All the fruit is there for you to pick, just remember to leave plenty for others.

We've added another picnic bench, donated by friends from the Village Shop in memory of the greatly missed Mandy Renton.

Everyone is welcome to come and enjoy this wonderful tranquil space.



## Photo Competition Winners

Thank you to everybody who joined in with our Landscape and Nature photo competition! The standard of the photos received was incredibly high, making the choices very hard for the judges but we are delighted to announce our winners!

Huge congratulations to Jan Szymanski, winner of the Over 16s Category with his delightful snowy scene, and to Zach Morgan, winner of the Under 16s Category, with his stunning picture of an owl in flight.

Congratulations also for the two Highly Commended entries in each category - Scott Jackson, Neil Harris, Freya Harris and Eva and Heidi B-G. To see their excellent photos visit our website. We are hoping to display these at some point - watch this space for details.

Many thanks again to the Malvern Hills National Landscape for kindly sponsoring this competition.



Photo by Jan Szymanski: Over 16s category winner



Photo by Zach Morgan: Under 16s category winner

## Phone Mast update

On 8th May the Planning Inspector published his decision to dismiss the appeal, thereby ruling out the proposed mobile phone mast. He concluded that the siting and appearance of the mast were unacceptable and that he had no compelling evidence that the public benefit would outweigh the harms. Consequently Atlas Tower, the developer, will not be pursuing investments in this area and the Parish Council will be looking into alternative solutions.

Full decision letter can be seen at [appeal-planning-decision.service.gov.uk/comment-planning-appeal/appeals](https://appeal-planning-decision.service.gov.uk/comment-planning-appeal/appeals) under reference 6003996.

## Welland Library: call for volunteers

We need more volunteers for our very special library in Welland!



We aren't super-busy, but we have a loyal and appreciative customer base who rely on us to provide this important service for them. It's not difficult and you get to spend time with books and very nice people of all ages.

If you can spare an hour or two to help out – even if not every week – pop in when the library is open or contact the Co-ordinator, Sandi, on 07903851181 to find out more. See opening times on back page of newsletter.

## Welland Parish Hall Update

The Parish Hall enhancements have taken shape and both rooms now have super new facilities. New atmospheric lighting, high performance speakers and public address systems, DVD players, online streaming services and powerful overhead projectors provide wonderful resources for all sorts of users; party goers, meeting presenters, fitness and wellbeing groups and more. If you want to arrange a get together to watch streamed materials, Welland Parish Hall has the technology. Book at [wellandparishhall.weebly.com](http://wellandparishhall.weebly.com)



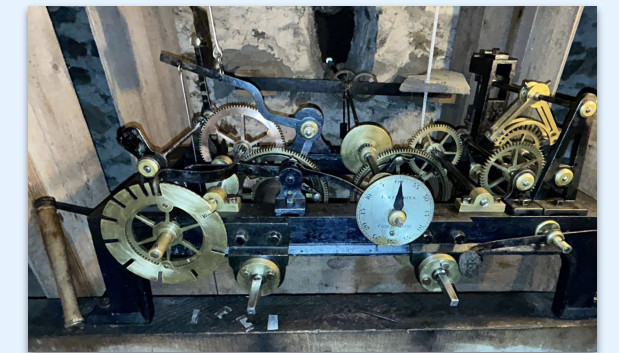
## St James Church update



St James Church's restoration programme continues to make excellent progress. The church clock has now been cleaned, restored and fitted with automatic winders, allowing it to run and chime once again. An automatic regulator will be installed later this summer, enabling the clock to receive the national time signal and provide an accurate time display for the village. Historically the clock had to be wound manually on a regular basis - we are extremely grateful to Chris and Jo Horrobin for their dedication in manually winding the clock for almost 20 years.

At the same time, major external repairs have been completed to help safeguard the church for the future. These have included replacement of the guttering, repairs to downpipes, repointing of walls and the chimney, and replacement or rehang of damaged roof tiles. Only one final repair remains before all scaffolding is removed - anticipated mid June.

These projects form part of the church's Future Proof Project and have been made possible through generous support from The National Lottery Heritage Fund, which awarded grants totalling £144,553, together with funding from The National Churches Trust and a contribution of £3,200 from Little Malvern and Welland Parish Council. St James Church is very grateful for this support, which will help ensure the building remains available for worship and community use for many years to come.



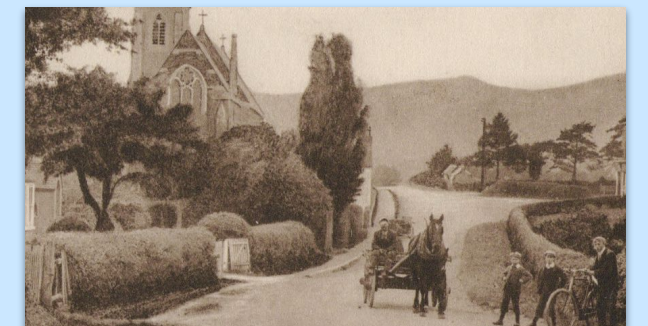
## Welland History Group: call for info

Welland History Group are compiling information on how farming in Welland was affected during World War II. We are interested in questions such as:

- How did food production change?
- How difficult was it to secure enough labour?
- Did any of the land girls sent here, stay on after the war?

We would be very grateful for any information from local people about their families' experiences - please email [wellandhistorygroup@gmail.com](mailto:wellandhistorygroup@gmail.com)

Have a look at our website: [wellandhistory.uk](http://wellandhistory.uk)



Join Welland House Care Centre on Saturday 18th July from 2-4pm for their annual Summer Fete and Garden Party!

There will be a number of stalls including tombola, knitted crafts, raffle, cake stall, refreshments, live music, and a tortoise and giant rabbit!

Free entry. Cash only event. All proceeds to Residents Fund.

If you'd like to volunteer, donate or help please email Elaine at [activity.wellandhouse@yahoo.com](mailto:activity.wellandhouse@yahoo.com)

## People's Emergency Briefing

Come and be part of a nationwide initiative to understand how climate change will affect every one of us, and what we can do about it.

Welland Parish Hall, Wednesday 1st July at 7pm.

The film, being shown around the UK, sets out the risks facing the nation – and the credible, positive responses available.

For our Welland screening, Wildlife author, Johnny Birks, will introduce the film and lead the discussion afterwards.

Entry is free but booking is required: Tickets available at [tickettailor.com/events/southmalvernpishenvironmentalgroups](http://tickettailor.com/events/southmalvernpishenvironmentalgroups)

## Welland Community Cinema

We meet in St James' Church on the first and third Fridays of each month to watch a variety of films and National Theatre Live performances.



Licensed bar and other refreshments available.

Films begin at 7pm.

For more info on the films visit [wellandcommunitycinema.uk](http://wellandcommunitycinema.uk)

Films: Tickets £5 adults/£2.50 children.  
National Theatre Live: Tickets £10

**5th June:** D.J. Ahmet  
**19th June:** H is for Hawk (12A)  
**3rd July:** Song Sung Blue (12A)  
**17th July:** Everybody to Kenmure Street (12A)  
**7th Aug:** Amelie (15)  
**21st Aug:** Rose of Nevada (15)

## POWICK COMMUNITY CHOIR with SABRINA VOICES

Powick Community Choir is performing in St James Church, Welland on Saturday 18th July at 7pm.

Featuring highlights from Elgar, Vaughan Williams, Stanford, Rutter.... And ABBA!

Tickets are £10 (under 18s free), available from 14th June via [powickcommunitychoir.info/tickets](http://powickcommunitychoir.info/tickets) - a limited number of tickets will also be available from Welland Village Shop and on the door (subject to availability).

There will be donation buckets fundraising for The Mockingbird Trust and The Music Therapy Charity.

Come along to enjoy this wonderful concert!

